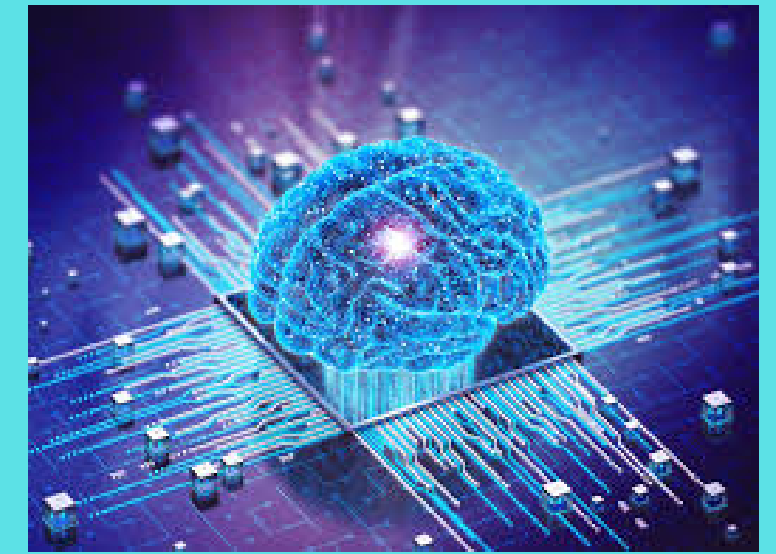


The use of AI

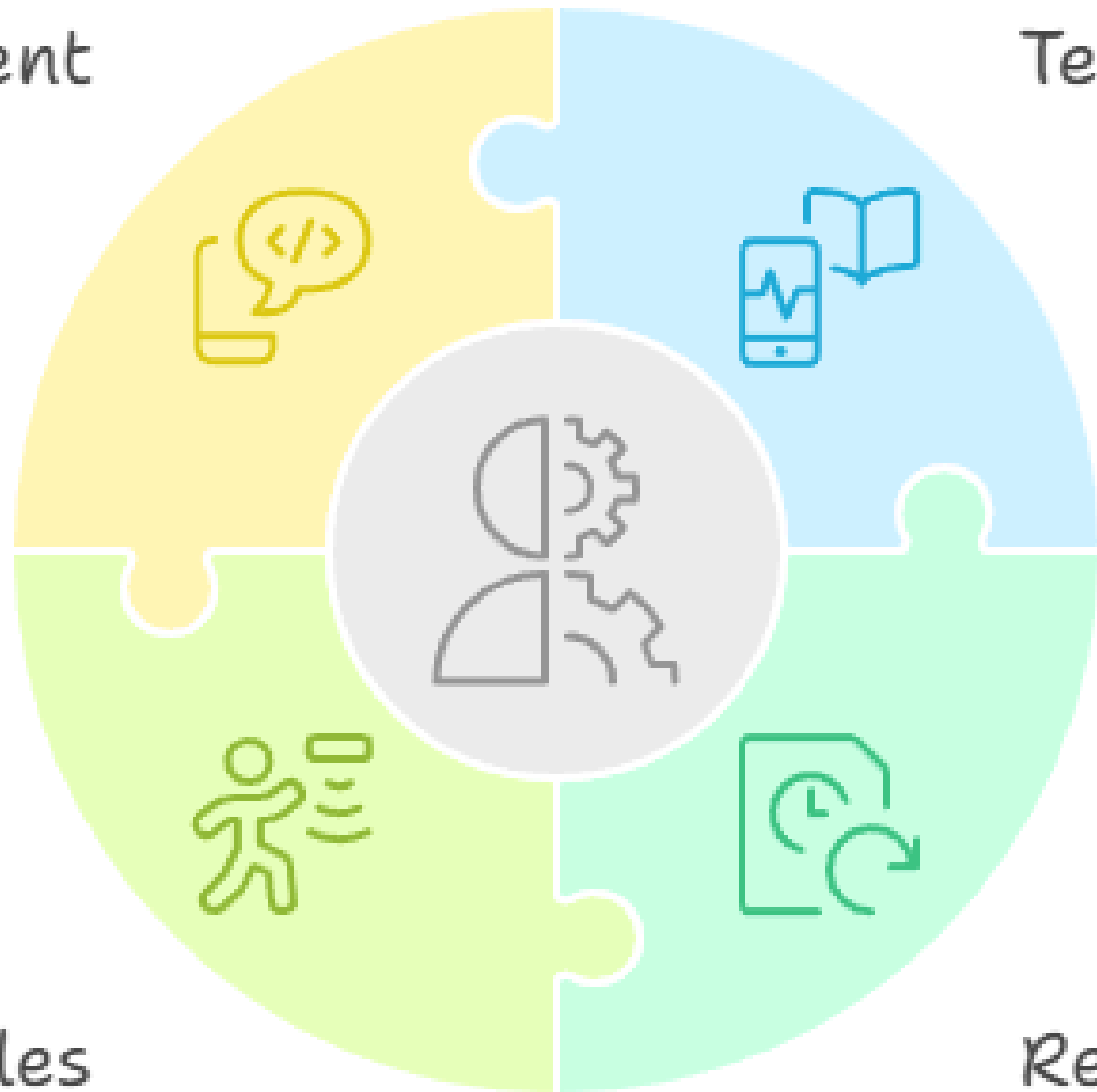


Artificial Intelligence (AI) refers to computer systems that perform tasks typically requiring human intelligence. Examples include language generation, image recognition, and decision-making tools. AI is increasingly present in everyday life, including education.

Transforming Education with AI

Enhances
Engagement

Supports
Teachers



Enables
Personalized
Learning

Reduces
Administrative
Workload

**The benefits
of AI within
schools...**

Risks and considerations...



1: Data privacy and protection (GDPR compliance).

How our policy mitigates this:

- We ensure no personal or sensitive data is entered into generative AI platforms.
- School policies require data processing agreements with any third-party tools used.
- Staff are trained to understand data minimisation and lawful basis for processing under GDPR.
- Parental informed consent is sought when pupil work is involved in AI use.

Risks and considerations...



2: Safeguarding concerns (KCSIE alignment).

How our policy mitigates this:

- AI use is aligned with Keeping Children Safe in Education (KCSIE) guidance.
- Safeguarding policies include monitoring and filtering systems to prevent exposure to harmful content.
- Staff are trained to recognise and respond to risks arising from AI use, including inappropriate interactions or content.
- AI tools are only used in supervised or controlled environments.

Risks and considerations...



3: Potential for bias or misinformation

How our policy mitigates this:

- Curriculum policies promote critical thinking and digital literacy, helping pupils evaluate AI-generated content.
- Teachers are advised to review and vet AI outputs before use in lessons.
- Schools may restrict AI use to specific platforms known for educational reliability.
- Policies encourage balanced use, ensuring AI complements rather than replaces teacher-led instruction.

Risks and considerations...



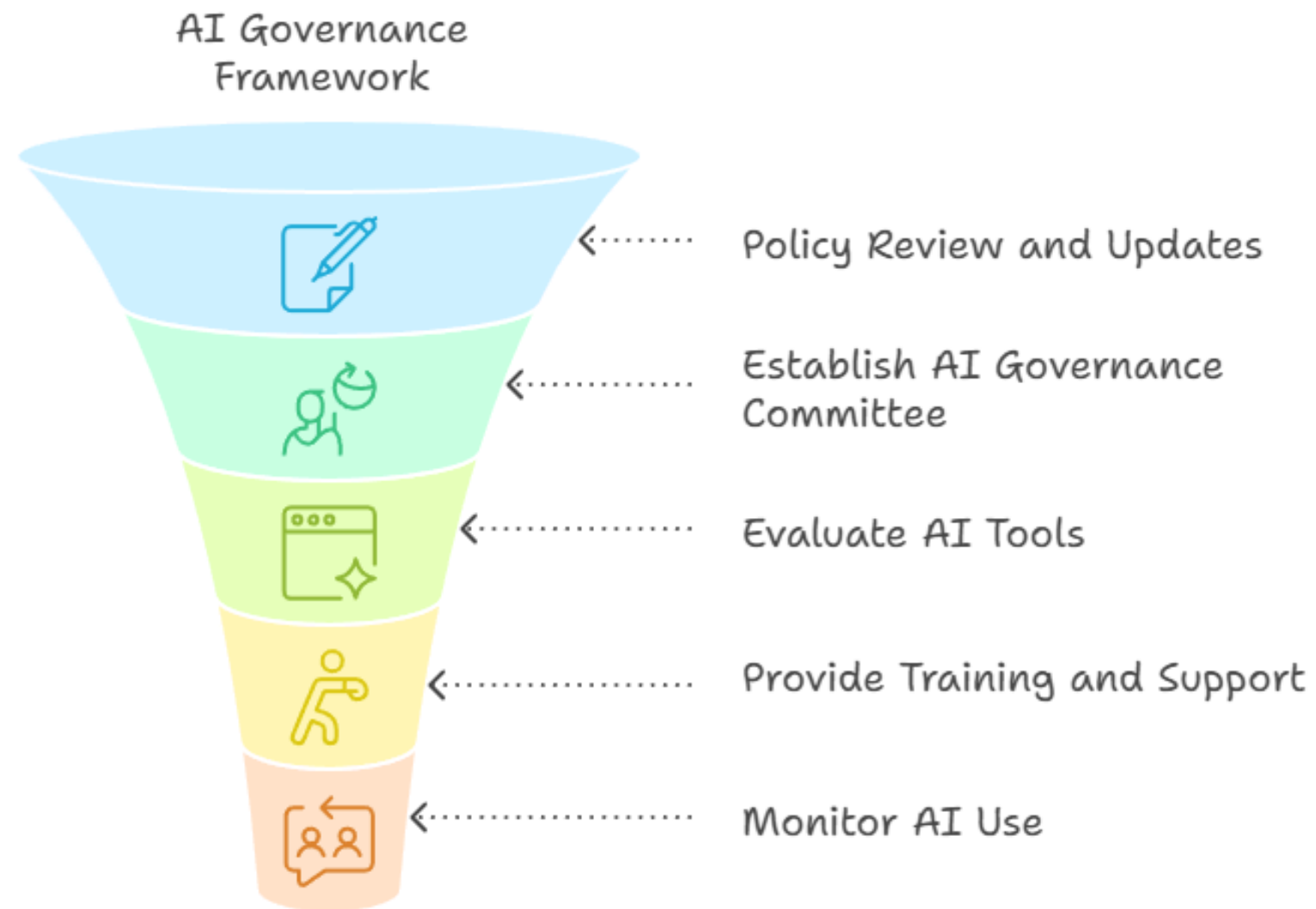
4: Age-appropriate use and digital safety

How our policy mitigates this:

- **Acceptable Use Policies (AUPs) define age-appropriate access and usage boundaries.**
- **AI tools are selected based on suitability for the age group, often using child-friendly alternatives.**
- **Pupils are taught about online safety, including the risks of interacting with AI.**
- **Use of AI is integrated into digital citizenship education, reinforcing responsible behaviour.**

Our approach and governance...

AI Governance Implementation Process



Our school implements an AI governance framework, prioritises teacher-facing tools, updates policies to reflect AI use, and ensures all applications are safe, responsible, and aligned with our values.



Parental engagement...



At Stepgates Community School, we are committed to keeping parents informed and involved in our approach to AI. Through regular updates, information sessions, and shared resources, we encourage open dialogue and welcome your feedback.

For further information and updates, please refer to our school website:

<https://www.stepgatesesschool.co.uk/page/?title=Online+Safety&pid=73>

Advice for Parents & Carers

A SAFE ENVIRONMENT
Empower children and young people to use the various AI models in a safe environment and with appropriate content filtering/supervision, and to raise any concerns or questions as they arise.

ENCOURAGE CRITICAL THINKING
Encourage children to use AI solutions as tools to help them research and learn, but remind them to not take the model's responses as the truth. Emphasise that they should question, verify and think critically about the information they receive.

DISCUSS BIAS
Discuss with children the potential biases that may be present in the responses generated by AI language models and encourage them not to simply accept the responses that it gives them at face value.

MONITOR USAGE
It is important for parents to monitor their children's usage of AI solutions (as with technology use in general) to ensure that they are utilising it responsibly and to provide opportunities to discuss its use, if needed.

ENCOURAGE HUMAN INTERACTION
Help children learn how to use AIs in conjunction with other resources, such as books and the internet, but also humans such as teachers, relatives and friends. Emphasise the importance of human interaction as part of life and as part of learning.

SCHOOL GUIDANCE
Be aware of school rules or other guidance in relation to the use of AI solutions in relation to a child's education and discuss appropriate and inappropriate with young people accordingly.

